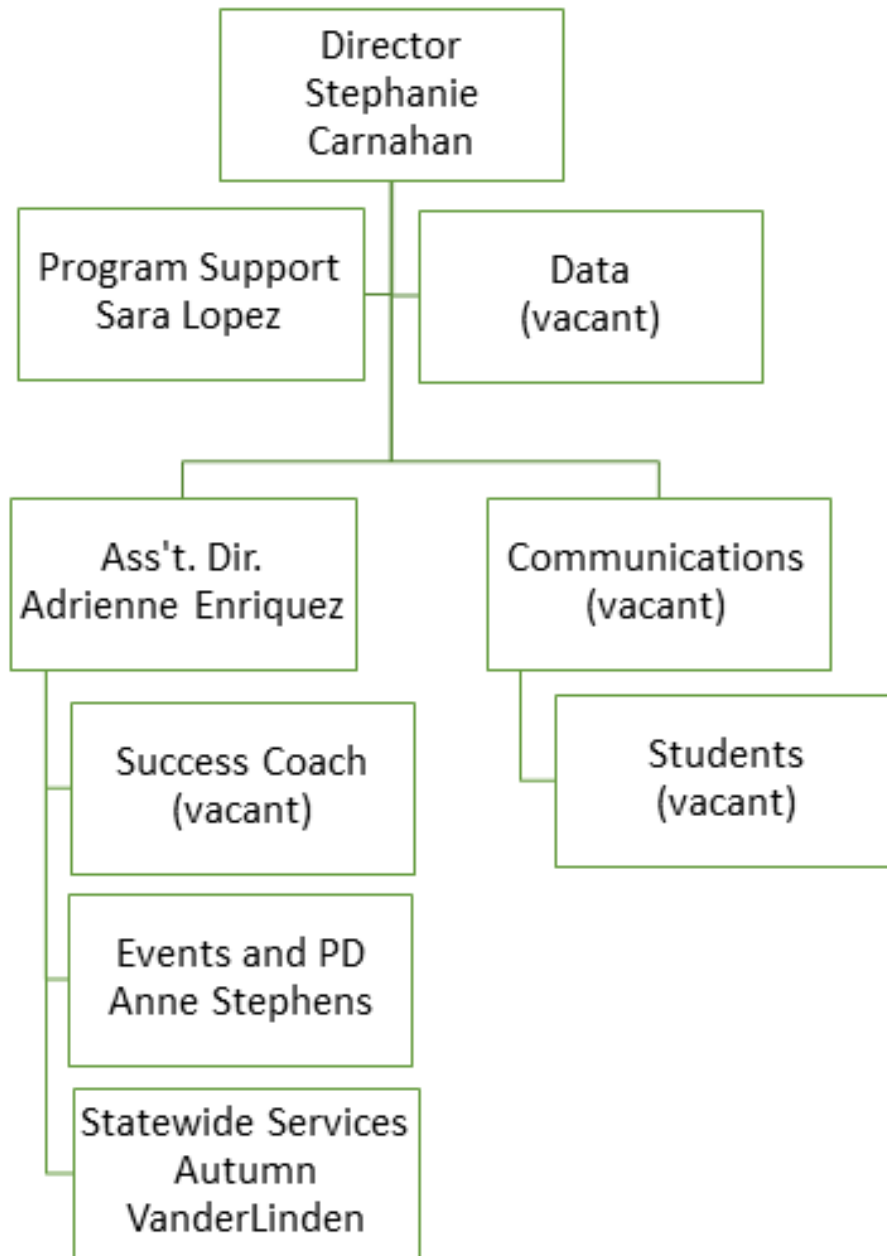


Who's Who

CENTRAL GEAR UP STAFF



ORG CHART



CONTACT INFO

GEAR UP STAFF CONTACT LIST	
<i>who & how</i>	<i>contact me for</i>
Stephanie Carnahan Project Director stephanie.carnahan@oregonstate.edu 541-737-2633	<ul style="list-style-type: none"> • administrative/compliance questions • college access in Oregon
Adrienne Enriquez Assistant Director adrienne.enriquez@oregonstate.edu 541-737-7701	<ul style="list-style-type: none"> • programmatic questions • yearly plans and budget • building and maintaining partnerships • general advice
TBD (contact Adrienne until hired) Success Coach	<ul style="list-style-type: none"> • first point of contact • yearly plans and budget • implementing GEAR UP activities • general advice
TBD Data Analyst	<ul style="list-style-type: none"> • surveys • data • event/activity evaluation • measurable objectives
Anne Stephens Events & Professional Development Specialist anne.stephens@oregonstate.edu 541-737-7699	<ul style="list-style-type: none"> • GEAR UP meetings • professional development • student events
TBD Communications Specialist	<ul style="list-style-type: none"> • website or social media • anything communications-related
Autumn VanderLinden Coordinator of Statewide Services autumn.vanderlinden@oregonstate.edu 541-737-7711	<ul style="list-style-type: none"> • 12th Grade Events: College Application Week, Spring Into Action & Decision Day • other Oregon Goes To College statewide initiatives
Sara Lopez Program Support sara.lopez@oregonstate.edu 541-737-7710	<ul style="list-style-type: none"> • events and cost share tracker • invoices, cost share, meeting registrations • t-shirts and promotional materials

GEAR UP PARTNER CONTACT LIST

<i>who & how</i>	<i>contact me for</i>
Metis Associates Julia Alemany jalemany@metisassoc.com Lindsay Abbot labbot@metisassoc.com	<ul style="list-style-type: none">• surveys• evaluation strategies
Oregon State Treasury John Valley John.Valley@ost.state.or.us	<ul style="list-style-type: none">• questions about Oregon College Savings Plan